

Web Tension Measurement Modules

FEATURES

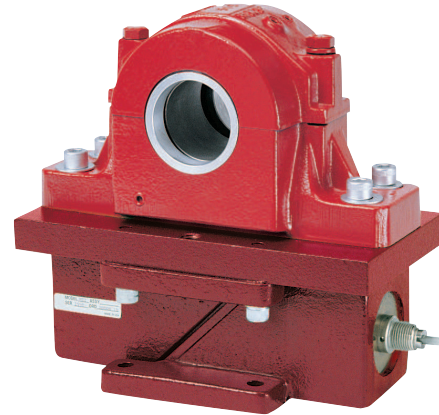
- Capacity range: 500, 1K, 2K, 5K, 10K, 20K and 50K lb (227, 454, 907, 2.27K, 4.54K, 9K and 22.7K kg)
- Rugged stainless steel 'I' beam sensing section
- Resultant forces measure in the up or down direction
- Full Wheatstone bridge with SR-4® foil strain gages
- Factory calibration eliminates need for on-site test weights
- Optional adapter plate designed for on-site installation of overload safety stops
- cFMus approved

APPLICATIONS

- Paper producing machines
- Roofing shingle manufacturing
- Printing presses
- Laminator zones
- Dryer zones
- Coating zones
- Felt measurement

DESCRIPTION

HTZ-3 Web Tension Measurement Modules are designed to mount directly below roller pillow blocks in new or existing installations. Each module includes an integral mounting pad for use with an optional pillow block adapter plate. Adapter plate design allows upward or downward measurement and provides safety stop installation points at each corner. Transducers are machined from high strength stainless steel to yield a rugged 'I' Beam sensing section. A full Wheatstone bridge array of temperature compensated, Foil SR-4 Strain Gages are attached to this section and calibrated for precision accuracy. Resulting temperature stability is due to closely matching the expansion coefficient of the sensing section to the gages.



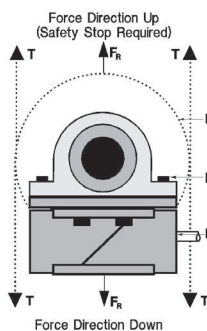
Module sealing meets NEMA 4 and IP65 requirements. An integral cable conduit fitting, epoxy sealed strain gages, and a stainless steel transducer ensure long-term reliability in wet or washdown locations.

Space required below the pillow block bearing is minimal, resulting in negligible line profile changes on retrofit installations. Overall height of the 1000 pound module is 2 inches. BLH Nobel provides HTZ-3 sizing recommendations based upon the actual sensing roll configuration.

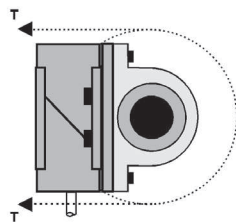
Modules are calibrated and certified with matched output signals to permit on-site, push-button system calibration.

CONFIGURATION – SYMMETRICAL WRAP ANGLES RECOMMENDED

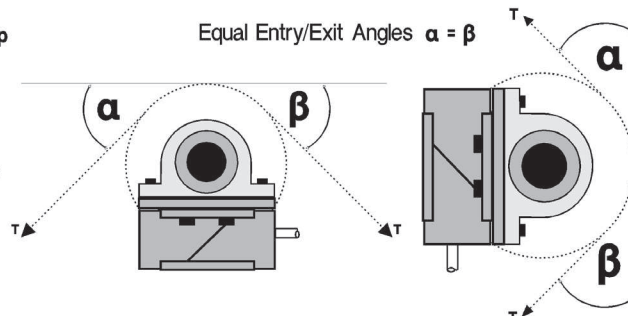
Horizontal Mounting 180° Wrap with Force Directed Up or Down



Vertical Mounting 180° Wrap

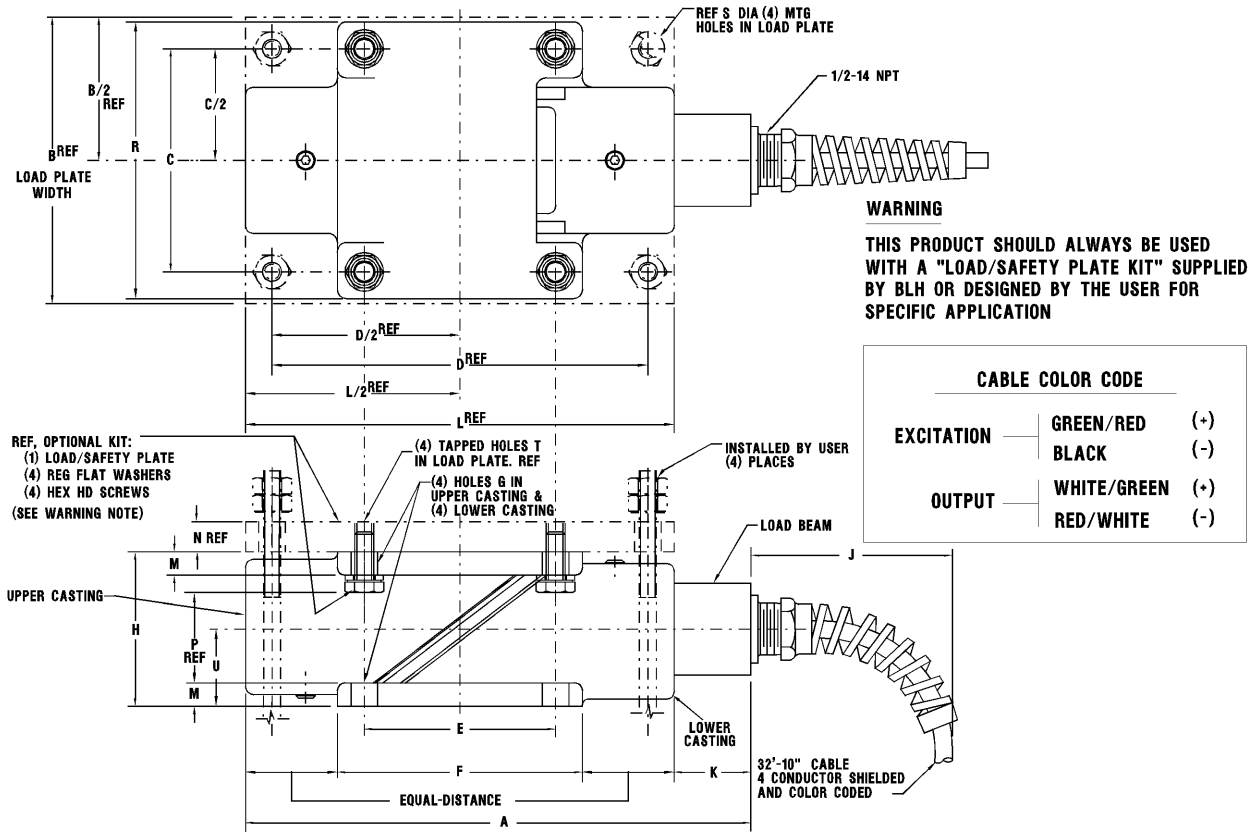


Equal Entry/Exit Angles $\alpha = \beta$



Web Tension Measurement Modules

OUTLINE DIMENSIONS



CAPACITY (lb)	A	B REF	C	D REF	E	F	G	H	J	K	L REF	M TYP	N REF	P REF	R	S REF	T REF	U
500	7.50	4	3.0	5.0	2.56	3.5	.32	2.00	3	1.50	6	.31	1/2	1.16	3.88	.50	1/4-20	1.00
1,000										1.25	7	.38	5/8	1.43	4.5	.62	3/8-16	1.25
2,000	8.25	4 1/2	3.62	6.0	3.12	4.0	.43	2.50		9	.56	3/4	1.91	5.5	.75	3/8-16	1.67	
5,000										FLUSH WITHIN	10	.75	7/8	2.03	6.38	.88	7/16-14	1.94
10,000	9.00	5 1/2	4.42	8.0	3.92	5.0	.43	3.34		+/- .12	12	1.00	1 1/4	2.03	7.50	1.00	5/8-11	2.30
20,000	10.00	6 1/2	5.06	8 3/4	4.18	5.5	.50	3.88										
50,000	12.00	8	6.00	10	5.00	6.5	.69	4.60										

Dimensions shown in inches.

Web Tension Measurement Modules

SPECIFICATIONS			
PARAMETER	VALUE		
PERFORMANCE (% RATED OUTPUT)			
Capacities	500, 1K, 2K, 5K, 10K, 20K, 50K lb (227, 454, 907, 2.27K, 4.54K, 9K and 22.7K kg)		
Rated output (RO)	2.0 mV/V \pm 0.1%		
Repeatability	0.01% RO		
Combined error (best fit)	0.10% RO		
Zero balance	5% RO		
Creep (20 minutes)	0.03% RO		
Temperature effects on zero balance	0.0017% RO/ $^{\circ}$ F (0.003%/ $^{\circ}$ C)		
Temperature effects on rated output	0.0020% Reading/ $^{\circ}$ F (0.0036%/ $^{\circ}$ C)		
ELECTRICAL			
Input and output resistance	350 Ω \pm 3 Ω		
Recommended excitation	10 or 15 VAC/VDC		
Maximum excitation	18 VAC/VDC		
TEMPERATURE			
Operating range	-40 to 220 $^{\circ}$ F (-40 to 105 $^{\circ}$ C)		
Compensated range	30 to 130 $^{\circ}$ F (-1 to 54 $^{\circ}$ C)		
		PARAMETER	
		VALUE	
		OVERLOAD RATING – % RATED CAPACITY	
		Safe overload	150
		Ultimate overload	300
		MATERIAL	
		Beam	15-5PH Stainless Steel
		Brackets	Ductile Iron with Enamel Paint
		Environmental class	NEMA 4/IP65
		Moisture protection	IEC Recommendation 68-2-4 Test D, 100 Cycles
		DEFLECTION UNDER LOAD UNIT WEIGHT	
		Capacity (lb)	Deflection
			Weight
		500, 1K	0.012 in
			10 lb
		2K	0.013 in
			15 lb
		5K	0.027 in
			15 lb
		10K	0.023 in
			35 lb
		20K	0.047 in
			50 lb
		50K	0.066 in
			75 lb

BLH Nobel is continually seeking to improve product quality and performance. Specifications may change accordingly.

Disclaimer

ALL PRODUCTS, PRODUCT SPECIFICATIONS AND DATA ARE SUBJECT TO CHANGE WITHOUT NOTICE.

Vishay Precision Group, Inc., its affiliates, agents, and employees, and all persons acting on its or their behalf (collectively, "VPG"), disclaim any and all liability for any errors, inaccuracies or incompleteness contained herein or in any other disclosure relating to any product.

The product specifications do not expand or otherwise modify VPG's terms and conditions of purchase, including but not limited to, the warranty expressed therein.

VPG makes no warranty, representation or guarantee other than as set forth in the terms and conditions of purchase. **To the maximum extent permitted by applicable law, VPG disclaims (i) any and all liability arising out of the application or use of any product, (ii) any and all liability, including without limitation special, consequential or incidental damages, and (iii) any and all implied warranties, including warranties of fitness for particular purpose, non-infringement and merchantability.**

Information provided in datasheets and/or specifications may vary from actual results in different applications and performance may vary over time. Statements regarding the suitability of products for certain types of applications are based on VPG's knowledge of typical requirements that are often placed on VPG products. It is the customer's responsibility to validate that a particular product with the properties described in the product specification is suitable for use in a particular application. You should ensure you have the current version of the relevant information by contacting VPG prior to performing installation or use of the product, such as on our website at vpgsensors.com.

No license, express, implied, or otherwise, to any intellectual property rights is granted by this document, or by any conduct of VPG.

The products shown herein are not designed for use in life-saving or life-sustaining applications unless otherwise expressly indicated. Customers using or selling VPG products not expressly indicated for use in such applications do so entirely at their own risk and agree to fully indemnify VPG for any damages arising or resulting from such use or sale. Please contact authorized VPG personnel to obtain written terms and conditions regarding products designed for such applications.

Product names and markings noted herein may be trademarks of their respective owners.

Copyright Vishay Precision Group, Inc., 2014. All rights reserved.