

## “Expert” Weight Transmitter

### FEATURES

- Individually digitized transducer data
- Continuous “Expert System” diagnostics
- Dynamic digital filtering
- 750,000 count resolution psr channel – 20 updates/sec.
- Multi-function set-up and calibration display
- Fault protected transducer excitation

### APPLICATIONS

- High value product batching
- Chemical process
- Weighing
- Fault tolerant weigh systems

### DESCRIPTION

The DXp-40 digital transmitter individually digitizes each transducer in a multi-cell weigh system for the purposes of greater system resolution and accuracy, and continuous diagnostics of system and transducer performance. In addition to the benefits of operational security, keypad calibration of each transducer eliminates the need for on-site deadweight calibration on many systems. Optional Dynamic Digital Filtering maximizes stability and dynamic response by continuously analyzing system noise characteristics and automatically adjusting software filtering parameters.

The optional 16 bit analog output provides a high-resolution weight data interface for non-digital process control equipment. Available discrete I/O points (4 inputs and 4 outputs) offer local setpoint control or diagnostic alarm status annunciation.



DXp-40 units provide designers with a wide range of communication and network options. Available “Easy Digital Interfaces” include Allen-Bradley Remote I/O, Modbus RTU, and conventional ASCII.

The DXp-40 is housed in a NEMA 4 or 4X enclosure and carries FM/CSA Approvals for Division 2 hazardous locations.

### CONFIGURATION

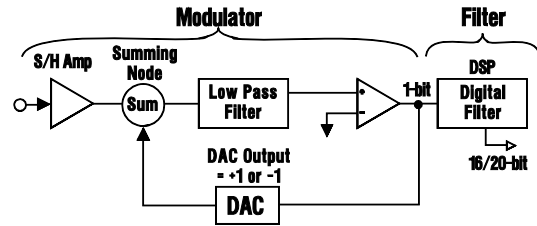


“Expert” Weight Transmitter

**OPERATING MODE DESCRIPTION**

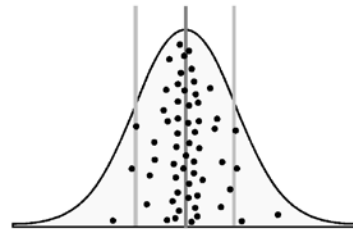
**Sigma Delta A-D Conversion**

Very high-resolution weight data is obtained by using an individual Sigma Delta A-D converter for each transducer input. This new technology uses a high-speed integrator coupled with a digital signal processor to produce a precision of up to one part in 750,000.



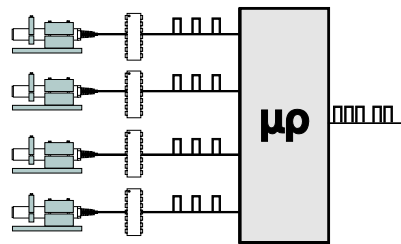
**Dynamic Digital Filter**

The combination of new A-D technologies and multi-channel control produce large quantities of internal weight information that is sampled and evaluated statistically to determine the sample mean and standard deviation. This vital information is then used to optimize filter averaging and filter cutoff bands to maximize both data stability and response to true weight changes.



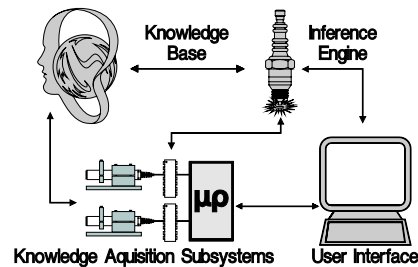
**Multi-Channel Synchronous**

A patented method to control the timing of several dependent A-D converters with a single microprocessor allows for the use of individual transducer data without accumulated errors due to mass moving within a vessel. This capability makes it possible to individually digitize each transducer in a multi-cell system and achieve the benefits of additive resolution and system redundancy.



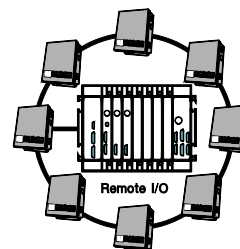
**Expert System Diagnostics**

The DXp-40 uses the expert system concept to compare various measurements against known standards of acceptable performance and uses that relative comparison to identify and diagnose both transducer and system performance problems. The BLH Nobel expert system can identify piping influences, structural problems, transducer drift and overload, and the location and characteristics of process noise.



**Allen Bradley Network**

The DXp-40 is also available with the Allen Bradley Remote I/O interface technology, which provides a very simple way to communicate weight and diagnostics information to the PLC-5 series of programmable logic controllers. Also, the DXp-40 can communicate using MODBUS™ or other industry standard protocols.

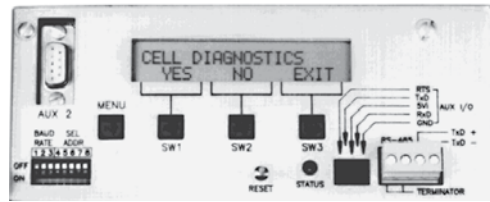


“Expert” Weight Transmitter

**PERFORMANCE ENHANCEMENT**

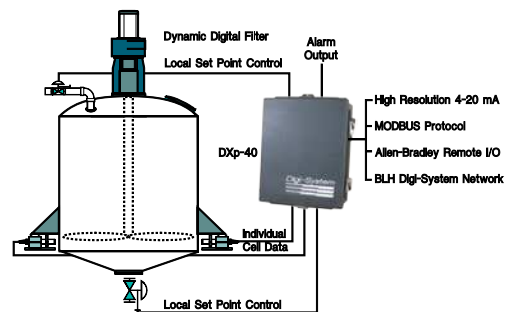
**Maximum Performance**

The DXp-40 combines true on-line transducer and system diagnostics, fault tolerance, and very high performance measurement capabilities. It is designed for applications involving the manufacture of high value product where downtime, undetected errors, and limited precision cannot be tolerated.



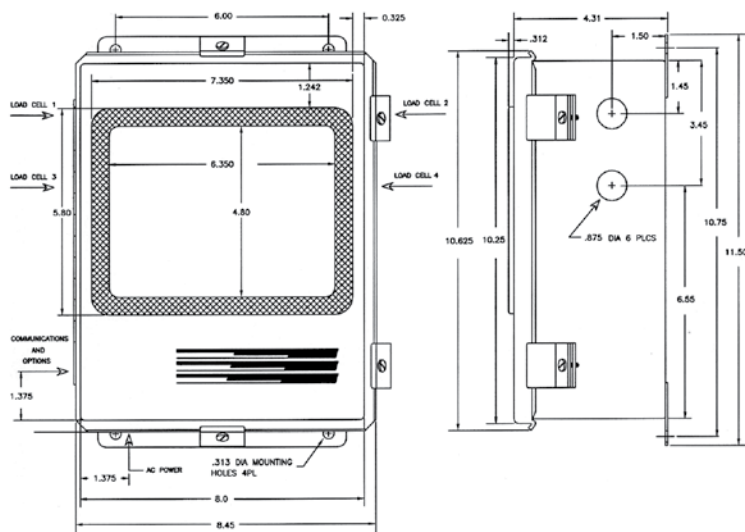
**Optional I/O**

The optional discrete and analog I/O can be used for local process control thereby reducing operating functions from the host computer. The Analog output is based on a high-resolution 16-bit D/A conversion. The four discrete inputs control remote gross/net, tare and selection of two preset filters. The four relay outputs can be mapped to either set point or diagnostic alarm functions.



**Set-Up and Operation**

Set-up, calibration, and operating parameters are easily entered using the two line 40-character LCD display and a series of 4 “soft buttons”. The display also allows the operator to view individual transducer data simultaneously during the normal operating mode.



## “Expert” Weight Transmitter

SPECIFICATIONS		PARAMETER	VALUE
<b>PERFORMANCE</b>		<b>ISOLATED ANALOG OUTPUT</b>	
Internal Resolution	4,194,304 total counts	Type	16 bit digital to analog
Max. Display Resolution	3,000,000 total counts	Voltage	0–10 V (25 k $\Omega$ min load)
Max. Res. Per Channel	750,000 counts	Current	4–20 mA (600 $\Omega$ max load)
Conversion Speed	50 ms (20 updates/s)	<b>RELAY OUTPUTS (OPTIONAL)</b>	
Sensitivity (Noise)	0.001 1% full scale (max $\pm$ 16 counts w/o filter)	Closed Contact	28 VAC/DC at 0.4 A (max)
Full Scale Range	$\pm$ 35 mV/channel	Solid State	110/220 VAC at 1.0 A
Dead Load Range	100%	<b>DIGITAL INPUTS</b>	
Input Impedance	10 M $\Omega$ , min. per channel	Logic“0” (Low) (min)	Less than 0.5 VDC, sink 3 mA
Load Cell Excitation	10 V (65 mA/channel max)	Logic“1” (High)	10 to 28 VDC (TTL open collector)
Remote Sense	User configurable, each channel	Mechanical Relay“0”	Closed (one side = digital common, the other side = input)
Linearity	$\pm$ 0.0015% of full scale	Mechanical Relay“1”	Open (input internally pulled up)
Calibration Repeatability	0.3 pV per count	<b>NETWORK SERIAL COMMUNICATION (STD)</b>	
Software Filter (Std.)	50 to 10,000 ms	Type	RS-485 Half Duplex (Multi-Drop)
<b>TEMPERATURE COEFFICIENT</b>		Baud	9,600, 28,800 and 56,700
Span/Zero	$\pm$ 2 ppm/ $^{\circ}$ C	Data Format	Proprietary
Step Response	one conversion	<b>SIMPLEX DATA OUTPUT (STANDARD)</b>	
Common Mode Rej.	100 db @ 60 Hz	Type	RS-485 (Simplex)
Normal Mode Rej.	100 db above 35Hz	Baud	1,200 or 9,600
<b>ENVIRONMENT</b>		Data Format (Selectable), ASCII	7 data bits, even parity, stop bit
Operating Temperature	–10 to 55 $^{\circ}$ C (12 to 131 $^{\circ}$ F)	<b>TERMINAL/COMPUTER INTERFACE (OPTIONAL)</b>	
Storage Temperature	–20 to 85 $^{\circ}$ C (–4 to 185 $^{\circ}$ F)	Interface Type	RS-485 half duplex (standard)
Humidity	5 to 90% rh, non-condensing	Baud	9,600 or 12,200
Voltage	117/230 + 15% 50/60 Hz	Protocol	Duplex command/ response format
Power	12 W max	ASCII	7 data bits, even parity, stop bit
<b>ENCLOSURE</b>		<b>SPECIAL PROTOCOLS (OPTIONAL)</b>	
Dimensions (NEMA 4/4X)	11.5 $\times$ 8.0 $\times$ 4.3 in H $\times$ W $\times$ D	Modbus	RTU Protocol
Optional (Explosion Proof)	12.875 $\times$ 10.875 $\times$ 8.188 in H $\times$ W $\times$ D	<b>SPECIAL INTERFACE (OPTIONAL)</b>	
Parameter Storage	EEPROM	Allen Bradley	Remote I/O – 1/4 logical rack
EMI/RFI	Shielded from typical interference	<b>WEIGHT</b>	
<b>INTERNAL DISPLAY/OPERATOR INTERFACE</b>		NEMA	4/4X 12.0 pounds
Standard	LCD Display 2 columns of 20 characters each	<b>APPROVALS</b>	
Optional VFD Display	High visibility, vacuum fluorescent same columns/characters as std.	FM (Factory Mutual)	3611 (Class I, II, III; Div.1,2; Groups A–G)
Interface	4 “soft buttons”	CSA	C22.2 (Class I, II, III; Div.1,2; Groups A–G)

**NOTE:** PLC and Allen-Bradley are trademarks of Allen-Bradley Co.,Inc. Modbus is a trademark of Schneider. BLH Nobel is continually seeking to improve product quality and performance. Specifications may change without notice.



## Disclaimer

ALL PRODUCTS, PRODUCT SPECIFICATIONS AND DATA ARE SUBJECT TO CHANGE WITHOUT NOTICE.

Vishay Precision Group, Inc., its affiliates, agents, and employees, and all persons acting on its or their behalf (collectively, "VPG"), disclaim any and all liability for any errors, inaccuracies or incompleteness contained herein or in any other disclosure relating to any product.

The product specifications do not expand or otherwise modify VPG's terms and conditions of purchase, including but not limited to, the warranty expressed therein.

VPG makes no warranty, representation or guarantee other than as set forth in the terms and conditions of purchase. **To the maximum extent permitted by applicable law, VPG disclaims (i) any and all liability arising out of the application or use of any product, (ii) any and all liability, including without limitation special, consequential or incidental damages, and (iii) any and all implied warranties, including warranties of fitness for particular purpose, non-infringement and merchantability.**

Information provided in datasheets and/or specifications may vary from actual results in different applications and performance may vary over time. Statements regarding the suitability of products for certain types of applications are based on VPG's knowledge of typical requirements that are often placed on VPG products. It is the customer's responsibility to validate that a particular product with the properties described in the product specification is suitable for use in a particular application. You should ensure you have the current version of the relevant information by contacting VPG prior to performing installation or use of the product, such as on our website at [vpgsensors.com](http://vpgsensors.com).

No license, express, implied, or otherwise, to any intellectual property rights is granted by this document, or by any conduct of VPG.

The products shown herein are not designed for use in life-saving or life-sustaining applications unless otherwise expressly indicated. Customers using or selling VPG products not expressly indicated for use in such applications do so entirely at their own risk and agree to fully indemnify VPG for any damages arising or resulting from such use or sale. Please contact authorized VPG personnel to obtain written terms and conditions regarding products designed for such applications.

Product names and markings noted herein may be trademarks of their respective owners.

Copyright Vishay Precision Group, Inc., 2014. All rights reserved.