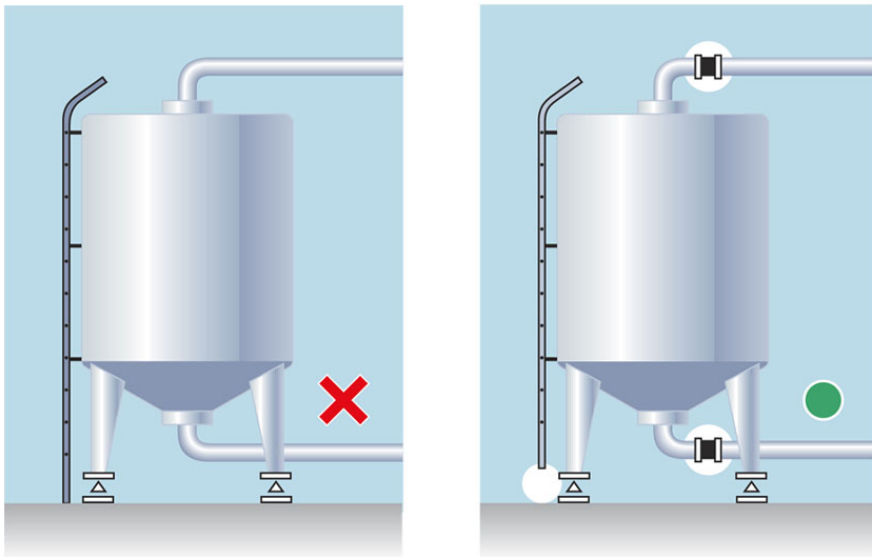


Example of LOAD MODULE orientation

Advices for mounting CLC-1



To achieve good weighing results, always use flexible connections to the vessel and check that no ladders or other arrangements connect the weighed vessel to surrounding foundation, walls or roof.



BLH NOBEL
A VPG Brand

Vishay Nobel AB

Box 423, SE-691 27 Karlskoga, Sweden
Phone +46 586 63000, Fax +46 586 63099
e-mail: blhnobel.se@vpgsensors.com
www.blhnobel.com

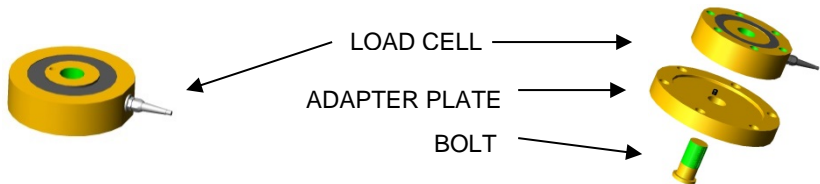
Document no. 35236
Publication 850373r0
© Vishay Nobel AB, 2017-08-31
Subject to changes without notice.

BLH NOBEL
A VPG Brand

1

Standard LOAD CELL

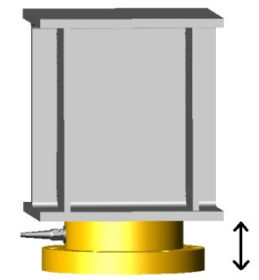
Standard LOAD CELL with adapter plate



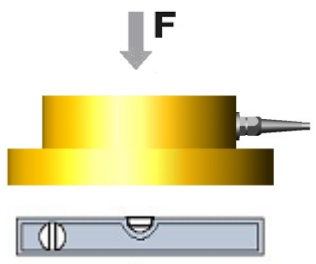
Load cell can be used with or without adapter plate. When ordered with adapter plate the module is preassembled.

5

Make sure mounting bolts is not used to pull uneven surfaces together,- use shims as appropriate. Deflection of load cell of full load is 0,1-0,2 mm, make sure this accepted by surrounding construction



2

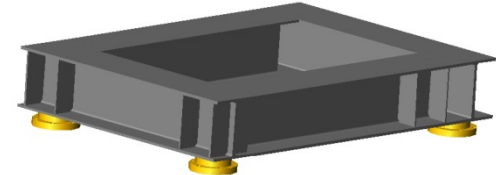


Install load cell between two flat surfaces of surface quality 6,3 μm or better. Planess and parallelism within ±0,15 mm General level of the load cell should be within ±1° in both directions.

Make sure the full top and bottom surfaces are covered by the flat surfaces.

6

Attach load cell under the frame or vessel supports. Observe that the bedding should be horizontal. And that the load cells should be plane.



3

Recommended bolts and torque.

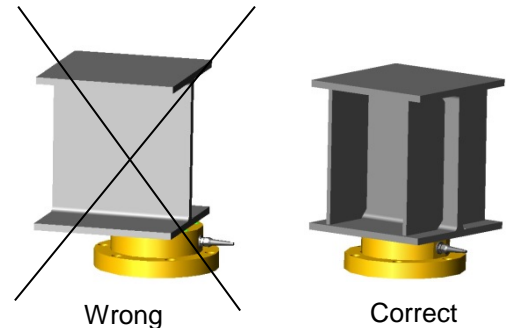
Capacity	Bolt size	Property Class	Fastening Torque
250/500 kN	M16	8.8	160± 20%
250/500 kN	M16	12.9	310± 20%
1000 kN	M20	8.8	300± 20%
1000 kN	M20	12.9	610± 20%
2000 kN	M24	8.8	530± 20%
2000 kN	M24	12.9	1100± 20%

7

For installations with four load cells or more, the output signals should be checked. Add shims between vessel support and YOKE to achieve similar signal levels.

4

Observe loading point position relative surrounding mechanical construction. It is very important that this is strong and must be rigid enough.



8

Important notices:

Tighten all bolts and nuts according to recommended values. Do not perform any welding with the LOAD MODULE in place.