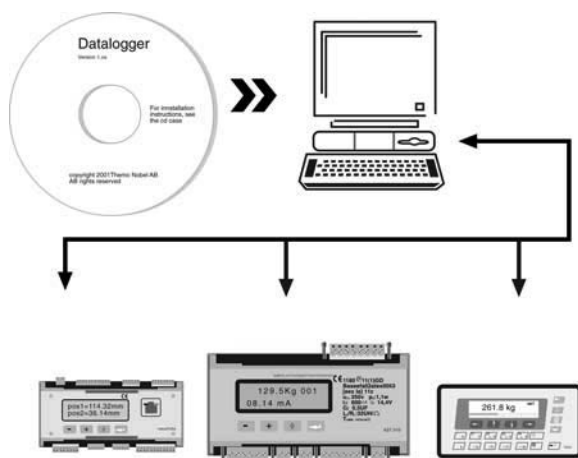


PC software Datalogger



FEATURES

- Datalogger is a plotting and logging utility program
- Can be used in conjunction with any of Nobel's instrument with a "modbus" communication port (i.e AST3, WST3, TAD3, microPOS, WEI...)
- Runs under Windows 95/98/NT4/Me/2000/XP

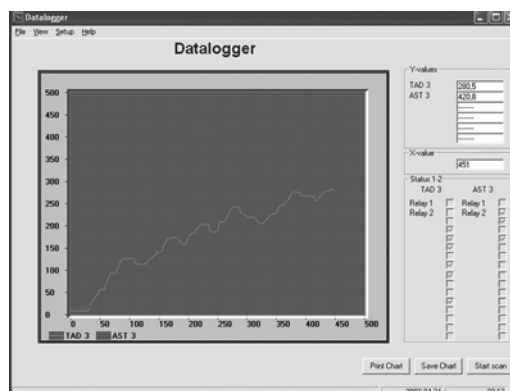
Basic functions includes

- Plot up to 6 curves in one graph.
- Plot mode can be either y/t or x/y.
- Can plot up to 2000 points (per curve) in each scan.
- Time between each point can be set between 0,05 and 65 s.
- A scan can be started manually, or be triggered on a value or a registers bitpattern.
- Stop of scan can be done manually, or be triggered on a value or a registers bitpattern.
- Six statusregisters (bit related) can be shown and each bit can be given a name.

- The graph can be zoomed, scrolled and saved to disk in two different formats. One format is a "datalogger file format" (.dlo) that can be opened and recreated in the datalogger graph window, and the other format is the Portable Network Graphics (.png) format, that offers a lossless compression of the bitmap and that can be imported in many other programs. The file name is derived from the system date and time (YYYY-MM-DD HHMMSS.dlo or YYYY-MM-DD HHMMSS.png) and the files are saved in the folders specified under the menu Setup.
- Two cursors can be freely placed in the graph, and the dy, dx is shown.

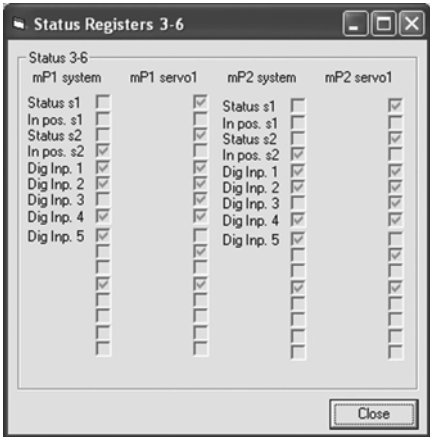
DATALOGGER (Main window)

Here you can run and monitor the plotting activities save/load and analyze graphs. You can also view the current values and the first two status registers



STATUS REGISTERS 3-6 (menu View)

Here you can monitor separately all bits of 4 additional status registers. The registers as well as all the bits are configured with their own names.



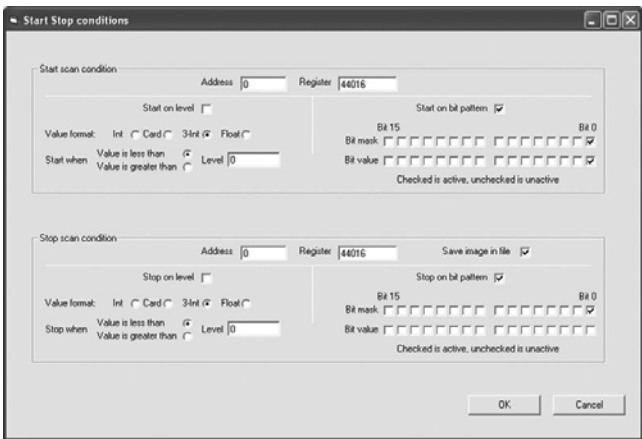
PARAMETERS (menu Setup)

Here you set up the data for the six different curves, as well as for the x-axis, the initial data for the graph window and the time resolution that should be used.



START STOP CONDITIONS (menu Setup)

Here you can set the conditions (value or bit pattern of a register) that starts and stop (incl. saves) the curve plotting



Disclaimer

ALL PRODUCTS, PRODUCT SPECIFICATIONS AND DATA ARE SUBJECT TO CHANGE WITHOUT NOTICE.

Vishay Precision Group, Inc., its affiliates, agents, and employees, and all persons acting on its or their behalf (collectively, "Vishay Precision Group"), disclaim any and all liability for any errors, inaccuracies or incompleteness contained herein or in any other disclosure relating to any product.

The product specifications do not expand or otherwise modify Vishay Precision Group's terms and conditions of purchase, including but not limited to, the warranty expressed therein.

Vishay Precision Group makes no warranty, representation or guarantee other than as set forth in the terms and conditions of purchase. **To the maximum extent permitted by applicable law, Vishay Precision Group disclaims (i) any and all liability arising out of the application or use of any product, (ii) any and all liability, including without limitation special, consequential or incidental damages, and (iii) any and all implied warranties, including warranties of fitness for particular purpose, non-infringement and merchantability.**

Information provided in datasheets and/or specifications may vary from actual results in different applications and performance may vary over time. Statements regarding the suitability of products for certain types of applications are based on Vishay Precision Group's knowledge of typical requirements that are often placed on Vishay Precision Group products. It is the customer's responsibility to validate that a particular product with the properties described in the product specification is suitable for use in a particular application.

No license, express, implied, or otherwise, to any intellectual property rights is granted by this document, or by any conduct of Vishay Precision Group.

The products shown herein are not designed for use in life-saving or life-sustaining applications unless otherwise expressly indicated. Customers using or selling Vishay Precision Group products not expressly indicated for use in such applications do so entirely at their own risk and agree to fully indemnify Vishay Precision Group for any damages arising or resulting from such use or sale. Please contact authorized Vishay Precision Group personnel to obtain written terms and conditions regarding products designed for such applications.

Product names and markings noted herein may be trademarks of their respective owners.