

## PC Software BatchView

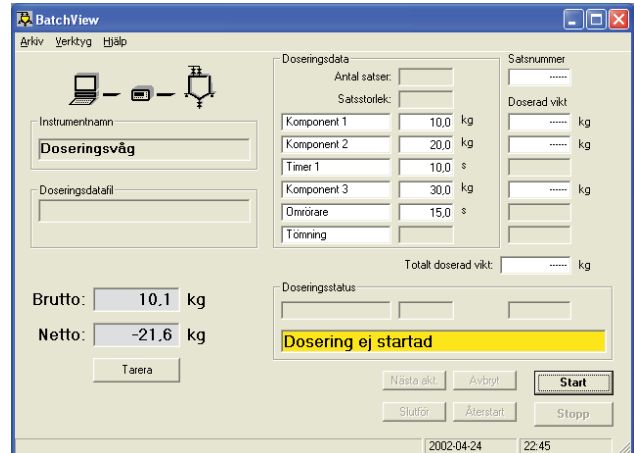
### FEATURES

- Monitoring batching (complete overview over the full batching sequence)
- Control of batching sequence (change setpoints, start, stop, halt, restart ...)
- Save “batch data” in file on PC (setpoints, batch size, number of batches ...)
- Load “batch data” from one (of many) previously saved “batch data” file
- Log batching activities in text file formatted for easy import into spread or data base
- Easy access to and overview over all accumulated weights
- Print accumulated weights on system printer
- Two levels of password protection

### DESCRIPTION

BatchView is a PC software for remote monitoring and control of the batching functions in BLH Nobel’s weight indicator TAD 3 with batching option. It runs under Windows 95/98/NT4/Me/2000/XP/Windows 7/Windows 8/Windows 10.

Functionally, BatchView provides an easy way to run and monitor a batching sequence in TAD 3 from the PC. Batch data (setpoints, batch size, number of batches) can easily be changed directly in the PC or selected and downloaded from any of a number of previously stored “batch data” files. This is especially useful when using a



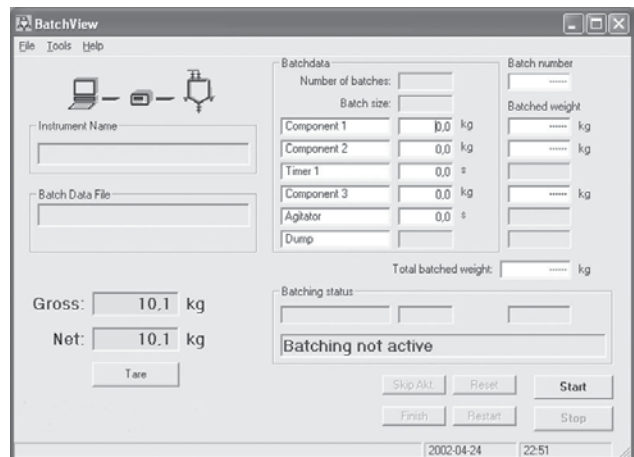
number of recurring “batch data” sets.

It is also possible to log all batching activities in a text file on the PC or anywhere on the local net. This file is formatted in a way that it can be easily read directly, or data can be imported into a database or spreadsheet for further handling. Accumulated weights can be easily overviewed, edited and printed on the system printer.

### PROGRAM WINDOWS USED IN BATCHVIEW

**BatchView (Main window):** Here you can run and monitor the batching sequence, edit the batch data, store/load batch data files.

**Accumulated weights (menu Tools):** Here you can monitor all accumulated weights. It is also possible to change the values here and to print all values on the system printer.



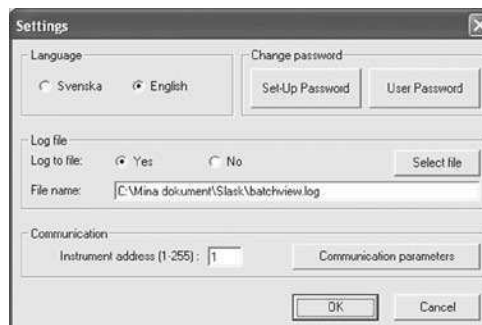
## PC Software BatchView

### PROGRAM WINDOWS USED IN BATCHVIEW (CONTINUED)

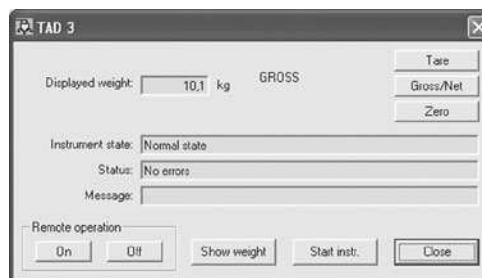
**Accumulated weights** (menu Tools): Here you can monitor all accumulated weights. It is also possible to change the values here and to print all values on the system printer.



**Settings** (menu Tools): In the settings window you can select language, specify two levels of passwords, name and path of the log file, the instrument address, communication parameters etc.



**TAD 3** (menu Tools): A utility window where you can check the status of the TAD 3 instrument and perform some actions on the instrument.



## Disclaimer

ALL PRODUCTS, PRODUCT SPECIFICATIONS AND DATA ARE SUBJECT TO CHANGE WITHOUT NOTICE.

Vishay Precision Group, Inc., its affiliates, agents, and employees, and all persons acting on its or their behalf (collectively, "VPG"), disclaim any and all liability for any errors, inaccuracies or incompleteness contained herein or in any other disclosure relating to any product.

The product specifications do not expand or otherwise modify VPG's terms and conditions of purchase, including but not limited to, the warranty expressed therein.

VPG makes no warranty, representation or guarantee other than as set forth in the terms and conditions of purchase. **To the maximum extent permitted by applicable law, VPG disclaims (i) any and all liability arising out of the application or use of any product, (ii) any and all liability, including without limitation special, consequential or incidental damages, and (iii) any and all implied warranties, including warranties of fitness for particular purpose, non-infringement and merchantability.**

Information provided in datasheets and/or specifications may vary from actual results in different applications and performance may vary over time. Statements regarding the suitability of products for certain types of applications are based on VPG's knowledge of typical requirements that are often placed on VPG products. It is the customer's responsibility to validate that a particular product with the properties described in the product specification is suitable for use in a particular application. You should ensure you have the current version of the relevant information by contacting VPG prior to performing installation or use of the product, such as on our website at [vpgsensors.com](http://vpgsensors.com).

No license, express, implied, or otherwise, to any intellectual property rights is granted by this document, or by any conduct of VPG.

The products shown herein are not designed for use in life-saving or life-sustaining applications unless otherwise expressly indicated. Customers using or selling VPG products not expressly indicated for use in such applications do so entirely at their own risk and agree to fully indemnify VPG for any damages arising or resulting from such use or sale. Please contact authorized VPG personnel to obtain written terms and conditions regarding products designed for such applications.

Product names and markings noted herein may be trademarks of their respective owners.

Copyright Vishay Precision Group, Inc., 2014. All rights reserved.